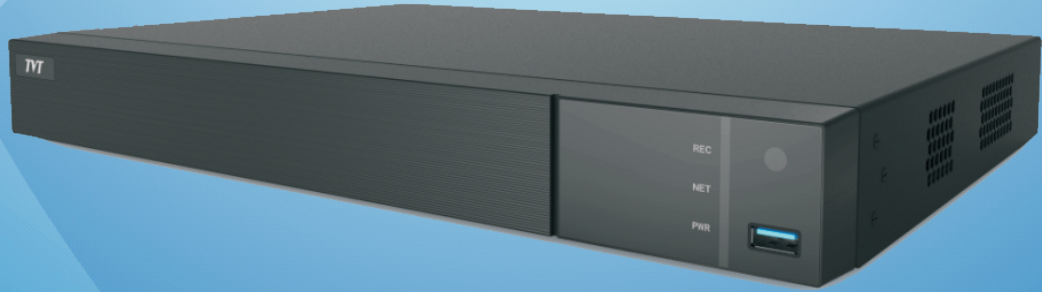


DVR

16CH Hybrid DVR



TD-2716NE-HC-H



HD



H.265



DDNS



Network



PTZ



Audio



MIC



Mobile



CMS



USB



Mouse



E-mail

TD-2716NE-HC-H adopts the standard H.265 high profile compression format and the advanced SOC technique to ensure real time recording in each channel and realize outstanding robustness of the system. TD-2716NE-HC-H supports 16 CH analog video input, 8CH IP video input, 8 CH audio input and simultaneous 16 CH playback. The series of product can meet different security requirements of home, financial, commerce, enterprise, transportation and government, etc.



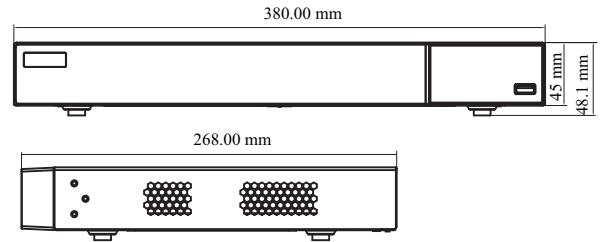
en.tvt.net.cn

For more information, please visit our website

Features

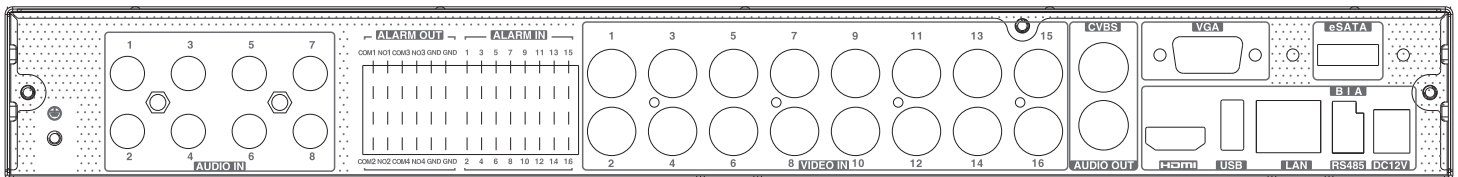
- Supports 16 CH TVI / AHD / CVI 5MP / 4MP / 1080P / 720P / WD1 video input
- Supports 8 CH 5MP / 4MP / 3MP / 1080P / 960P / 720P IP video input
- 8CH analog video input can be switched to 8CH IP video input
- Standard H.265 high profile compression format to get high-quality video at much lower bit rate
- Intuitive and user-friendly Graphics User Interface (GUI), window style operation by mouse
- Multi-mode recording: manual / timed / motion/AI recording
- Playback : 16 CH simultaneously playback
- Search: time slice, time, event, tag and smart search
- Express and flexible backup via USB, network and so on
- Pentaplex: preview, record, playback, backup and remote access
- DHCP, DDNS, PPPoE network protocol
- Remote control via Web Client or CMS : preview, playback, backup, PTZ and configuration
- Support remote network transmission and remote surveillance with mobile device
- Authorization management, log review and device status review
- 1080P output, true high resolution display
- Supports PTZ preset and auto cruise, up to 255 presets and 8 cruises
- Supports NAT function and QRCode scanning by mobile phones
- Powerful mobile surveillance by smart phones with iOS and Andriod OS

Dimensions



Rear Panel

TD-2716NE-HC-H



Specifications

| Model | | TD-2716NE-HC-H |
|----------------------|--------------------------|---|
| System | OS | Embedded Linux |
| Video | Analog Video Input | BNC × 16 |
| | | BNC interface (1.0Vp-p; 75Ω) |
| | | TVI/AHD/CVI : 5MP@20fps; 4MP/1080P/720P/WD1@30fps (live) |
| | IP Video Input | 8CH (up to 16CH) |
| | | Up to 5MP@30fps |
| | Total Input | 24CH |
| | Output | HDMI × 1 : 1920 × 1080 / 1280 × 1024 / 1024 × 768 VGA × 1 : 1920 × 1080 / 1280 × 1024 / 1024 × 768 BNC × 1 : CVBS (used as the main or spot output) |
| Compression | H.264/H.265 | |
| Multi-screen Display | 1/4/6/8/9/13/16/25 | |
| Audio | Input | RCA × 8 |
| | Output | RCA × 1 (linear, 600Ω) |
| | Two-way audio | Take up channel one audio input |
| | Compression | G.711(U/A) |
| Record | Resolution | 5MP Lite/4MP Lite / 1080P/1080P Lite/720P/WD1 |
| | Frame Rate | Analog Channel: 5MP Lite@10fps (PAL / NTSC) 4MP Lite/1080P@12fps(PAL) / 15fps (NTSC) 1080P Lite/720P/WD1/D1@25fps (PAL) / 30fps (NTSC) IP Channel: 25fps (PAL) / 30fps (NTSC) |
| | Bit Rate | 32Kbps ~ 8Mbps |
| | Mode | Manual, timer, motion, smart event |
| Playback | Playback | 16CH |
| | Search | Time slice / time / event / tag search |
| | Smart Search | Highlight colors to display the camera record in a certain period of time, different colors refer to different record events |
| | Function | Play, pause, FF, FB, digital zoom, etc. |
| Alarm | Mode | Manual, motion, exception, smart event |
| | Input | 16CH |
| | Output | 4CH |
| Network | Interface | RJ 45 1000Mbps × 1 |
| | Protocol | TCP/IP, PPPoE, DHCP, DNS, DDNS, UPnP, HTTP, HTTPS, NTP, SMTP |
| | Incoming Bandwidth | 32Mbps |
| | Outgoing Bandwidth | 96Mbps |
| | Client Connection | Max. 10 users access |
| MobileDevice | OS | iOS, Andriod |
| Storage | HDD | SATA×2, up to 10TB per HDD; E-SATA×1 |
| Backup | Local Backup | U disk, USB mobile HDD |
| | Network Backup | Yes |
| Port | RS 485 | Yes (half-duplex), connect to PTZ or keyboard |
| | USB | USB 2.0 × 1; USB3.0×1 |
| | Remote Controller | Optional |
| Others | Power Supply | DC12V/4A |
| | Consumption | ≤ 15W (without HDD) |
| | Dimensions(mm) | 380 × 268 × 45 (W × D × H) |
| | Working Environment | -10~50°C, 10%~90% (humidity) |
| | Certificate | CE, FCC |
| | Environmental Protection | Directive EU RoHS, WEEE, REACH |